

2008 Weather Summary for Fayetteville, Arkansas

Mike Richardson¹ and Chris Stiegler¹

Richardson, M., and C. Stiegler 2009. 2008 weather summary for Fayetteville, Arkansas. Arkansas Turfgrass Report 2008, Ark. Ag. Exp. Stn. Res. Ser. 568:168-169.



Weather station at the Fayetteville U of A research center

Summary. Summary data on air temperature, soil temperature (1-inch depth), and monthly rainfall totals at the University of Arkansas Agricultural Research and Extension Center, Fayetteville, Ark., are presented (Fig. 1) as a supplement to the 2008 Arkansas Turfgrass Report. All data were collected using a weather station (WatchDog, Model 2700, Spectrum Technologies, Plainfield, Ill.) located near the turfgrass research plots at the Fayetteville research station (36° 06' 04.06" N, 94° 10' 24.89" W, Eleva-

tion – 1266 ft). The most unusual weather pattern that was observed in 2008 was a higher than average rainfall, especially during the spring months and again in late summer. The rainfall total for the year was 54 inches, which is approximately 8 inches over the normal amount for this site. The Fall was slightly drier than the 30-year average. The temperature patterns somewhat mimicked rainfall, in that the Spring was slightly cooler than normal and the Fall was slightly warmer than the 30-year average.

¹ University of Arkansas, Department of Horticulture, Fayetteville, Ark. 72701

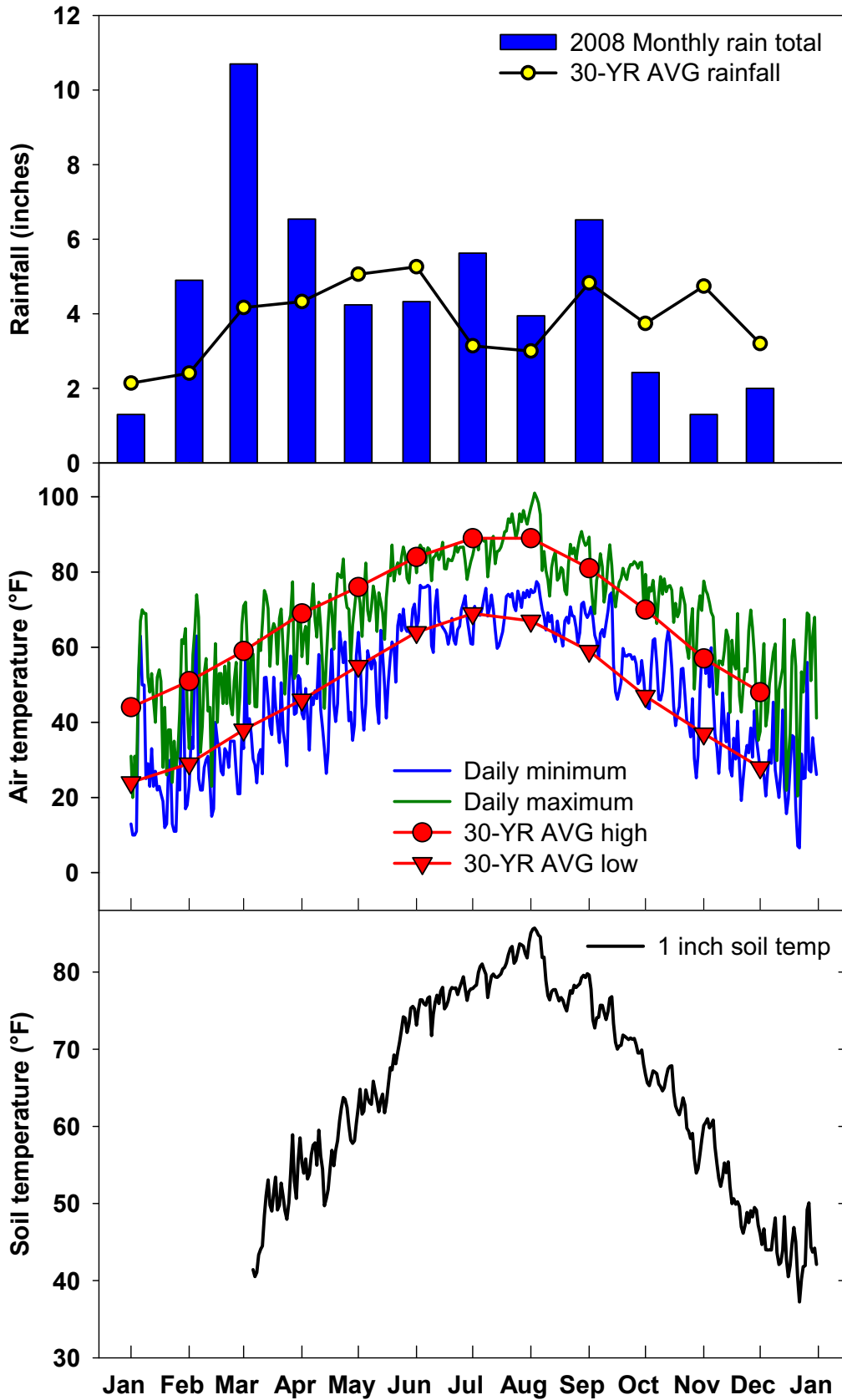


Fig. 1. Monthly rainfall, daily high and low temperatures, and soil temperatures at Fayetteville, Ark. The 30-yr average for rainfall and temperature is presented for reference.